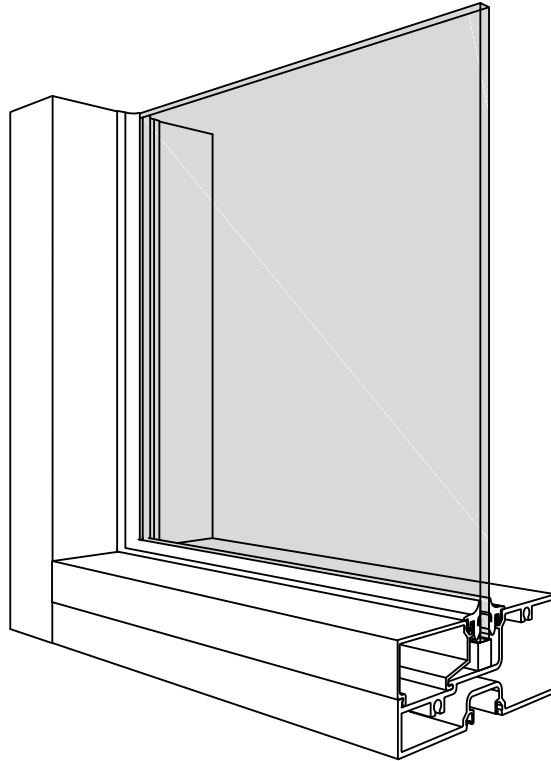


# 630 SERIES



## KEY FEATURES

- Interior flush glaze
- Non-thermally broken
- 1  $\frac{3}{4}$ " x 4  $\frac{1}{2}$ " profile
- Exterior glazed
- 6mm ( $\frac{1}{4}$ ") and 10mm ( $\frac{3}{8}$ ") glazing thickness
- Compatible with Windspec doors



**WINDSPEC** INC.

MANUFACTURERS OF HIGH PERFORMANCE 'WINDSPEC' WINDOWS  
ALUMINUM ENTRANCE SYSTEMS AND ARCHITECTURAL PANELS  
1310 CREDITSTONE RD, CONCORD, ONTARIO L4K 5T7  
Telephone (905) 738 -8311 Fax (905) 738 - 6188

FEBRUARY 2017

# 630 SERIES

## TABLE OF CONTENTS

TYPICAL & DOOR DETAILS _____	003
WIND LOAD CHARTS _____	007
PARTS LIST _____	009



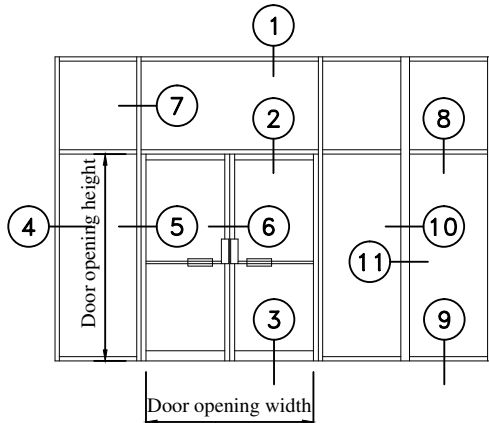
**WINDSPEC** INC.

MANUFACTURERS OF HIGH PERFORMANCE 'WINDSPEC' WINDOWS  
ALUMINUM ENTRANCE SYSTEMS AND ARCHITECTURAL PANELS  
1310 CREDITSTONE RD, CONCORD, ONTARIO L4K 5T7  
Telephone (905) 738 -8311 Fax (905) 738 - 6188

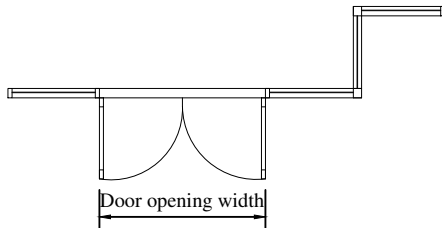
FEBRUARY 2017

# 630 SERIES

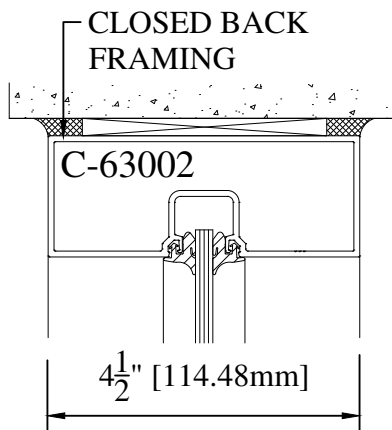
## TYPICAL & DOOR DETAILS



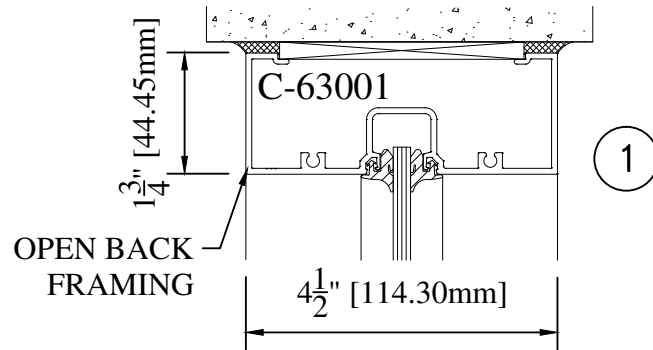
ELEVATION



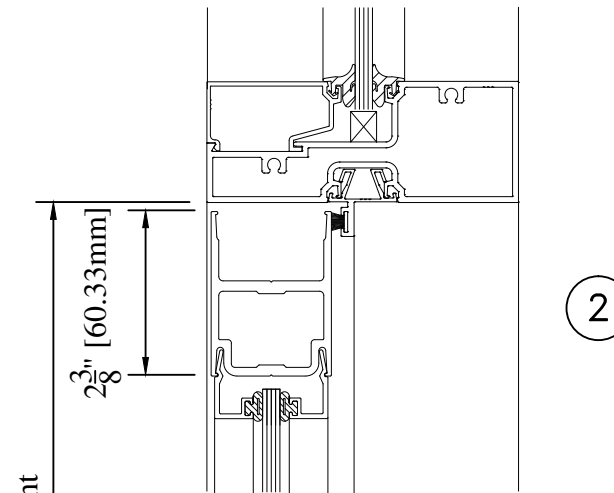
PLAN



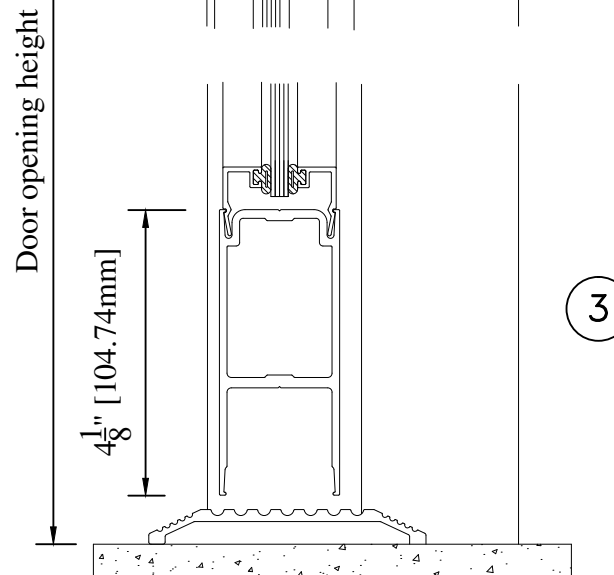
1a



1



2



3



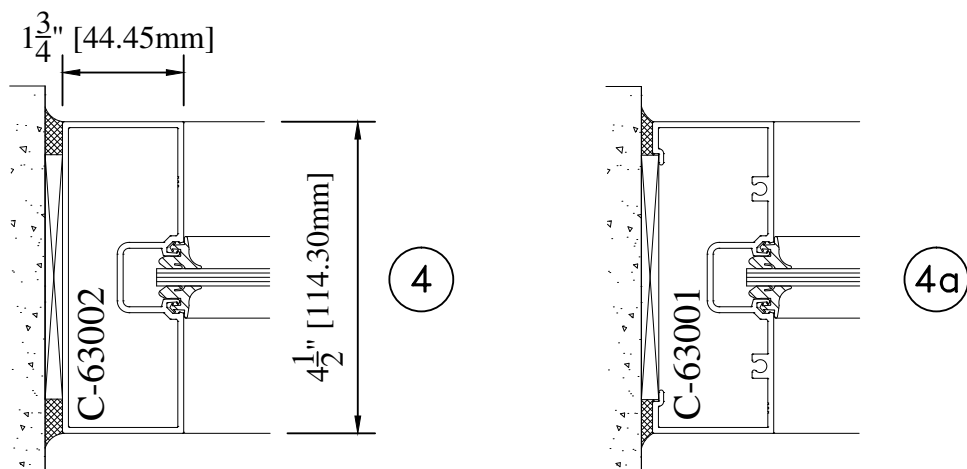
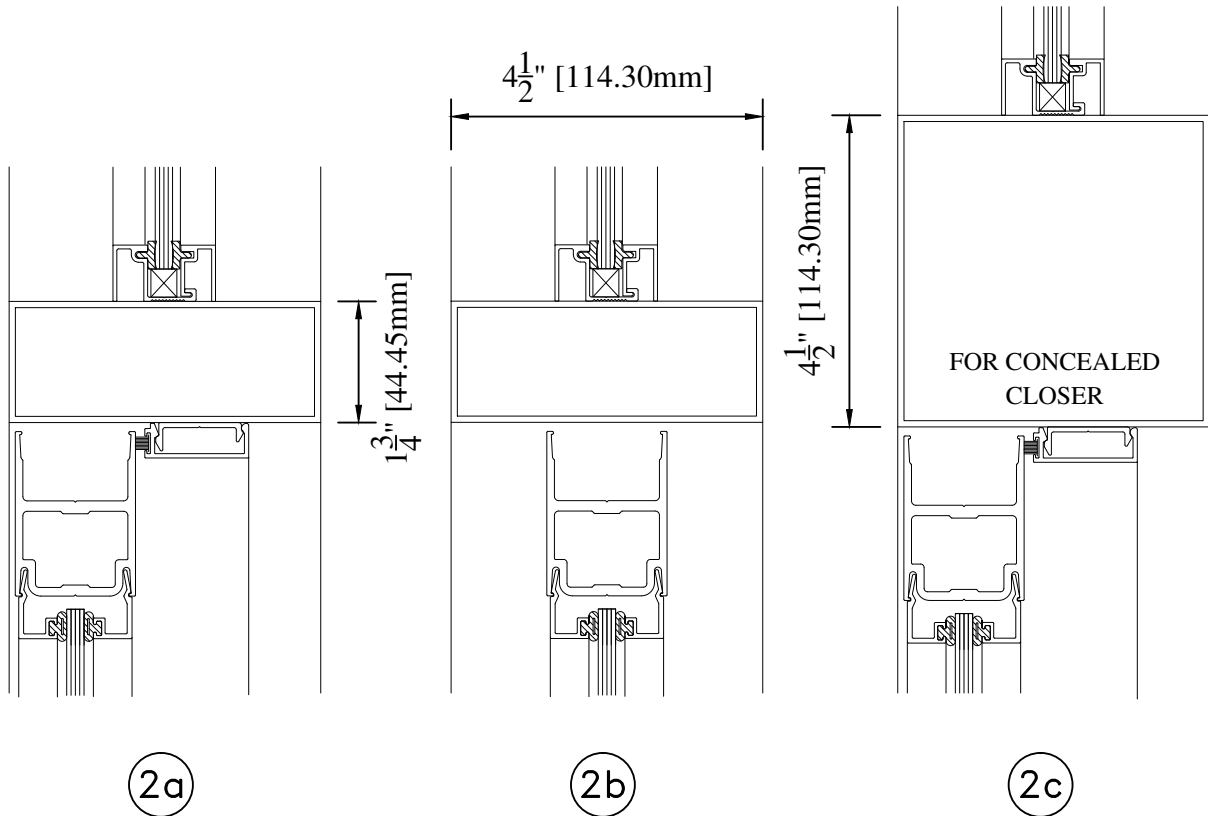
**WINDSPEC** INC.

MANUFACTURERS OF HIGH PERFORMANCE 'WINDSPEC' WINDOWS  
ALUMINUM ENTRANCE SYSTEMS AND ARCHITECTURAL PANELS  
1310 CREDITSTONE RD, CONCORD, ONTARIO L4K 5T7  
Telephone (905) 738-8311 Fax (905) 738-6188

FEBRUARY 2017

# 630 SERIES

## TYPICAL & DOOR DETAILS

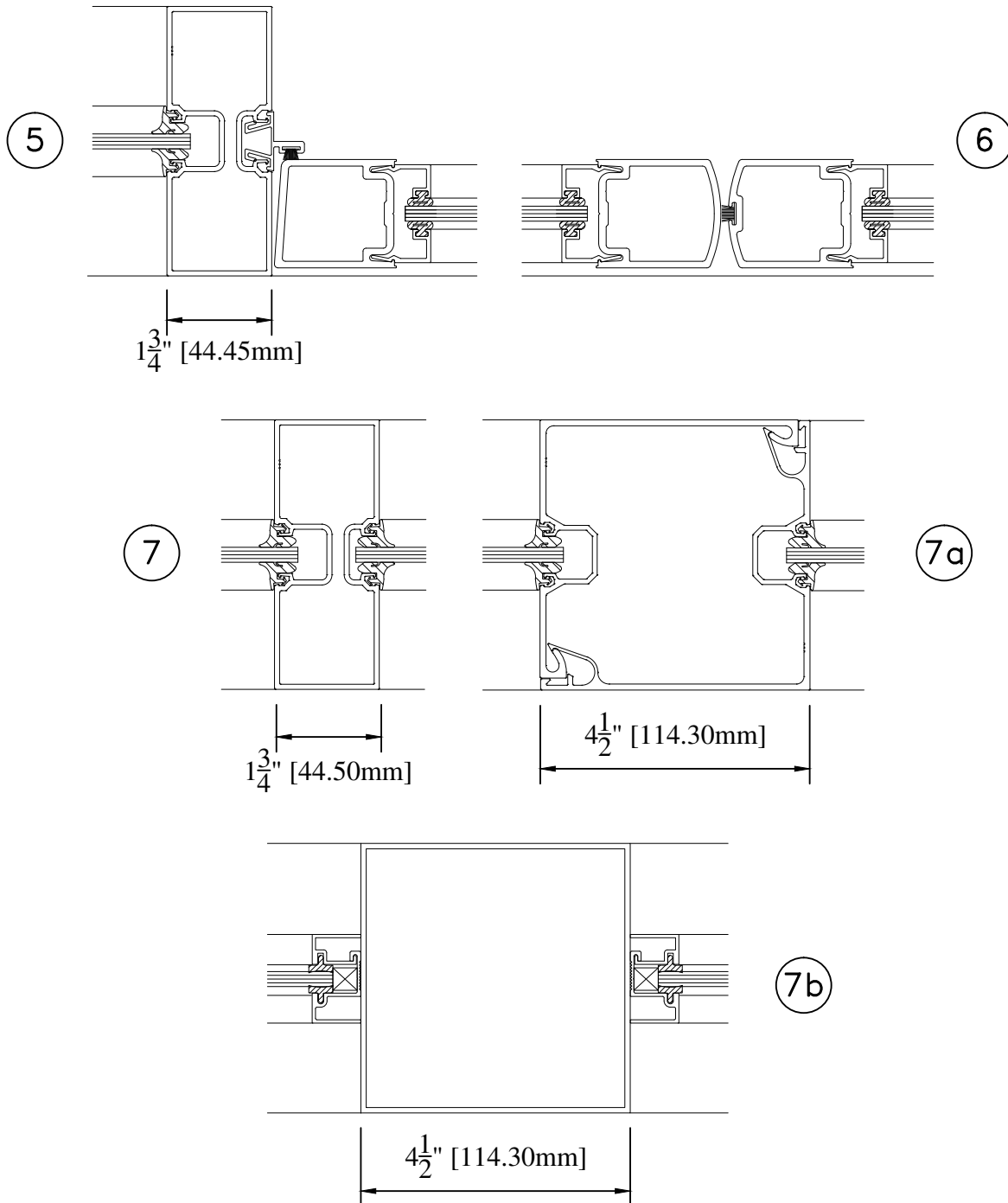


**WINDSPEC** INC.  
MANUFACTURERS OF HIGH PERFORMANCE 'WINDSPEC' WINDOWS  
ALUMINUM ENTRANCE SYSTEMS AND ARCHITECTURAL PANELS  
1310 CREDITSTONE RD, CONCORD, ONTARIO L4K 5T7  
Telephone (905) 738 -8311 Fax (905) 738 - 6188

FEBRUARY 2017

# 630 SERIES

## TYPICAL & DOOR DETAILS

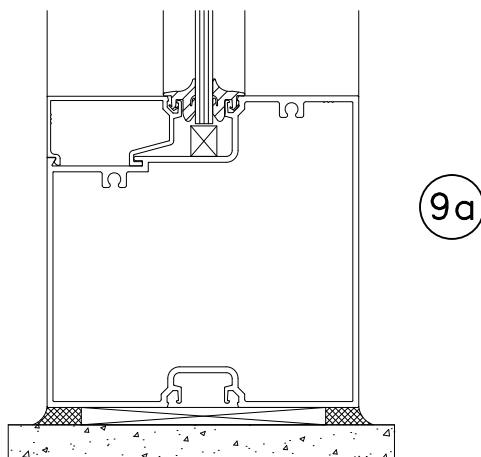
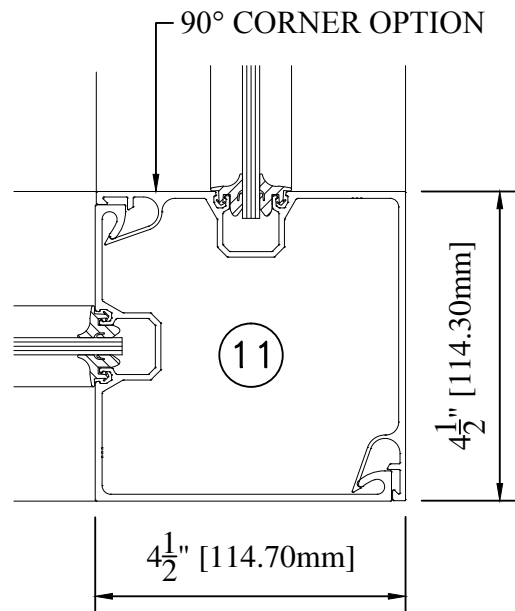
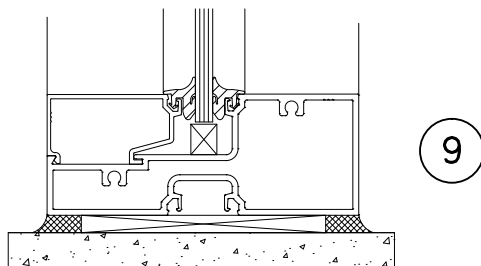
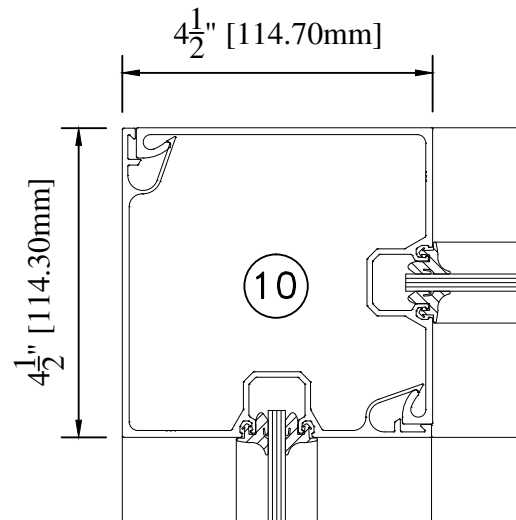
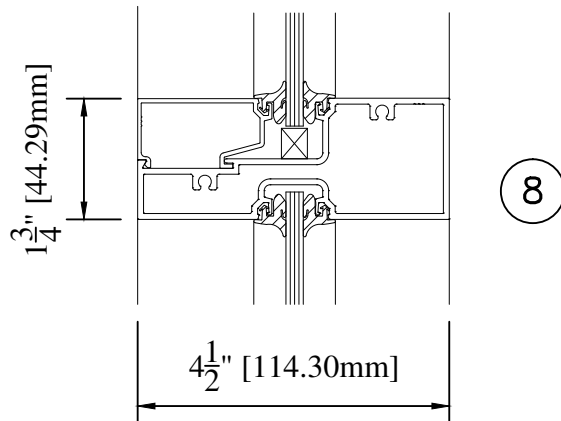


**WINDSPEC** INC.  
MANUFACTURERS OF HIGH PERFORMANCE 'WINDSPEC' WINDOWS  
ALUMINUM ENTRANCE SYSTEMS AND ARCHITECTURAL PANELS  
1310 CREDITSTONE RD, CONCORD, ONTARIO L4K 5T7  
Telephone (905) 738-8311 Fax (905) 738-6188

FEBRUARY 2017

# 630 SERIES

## TYPICAL & DOOR DETAILS



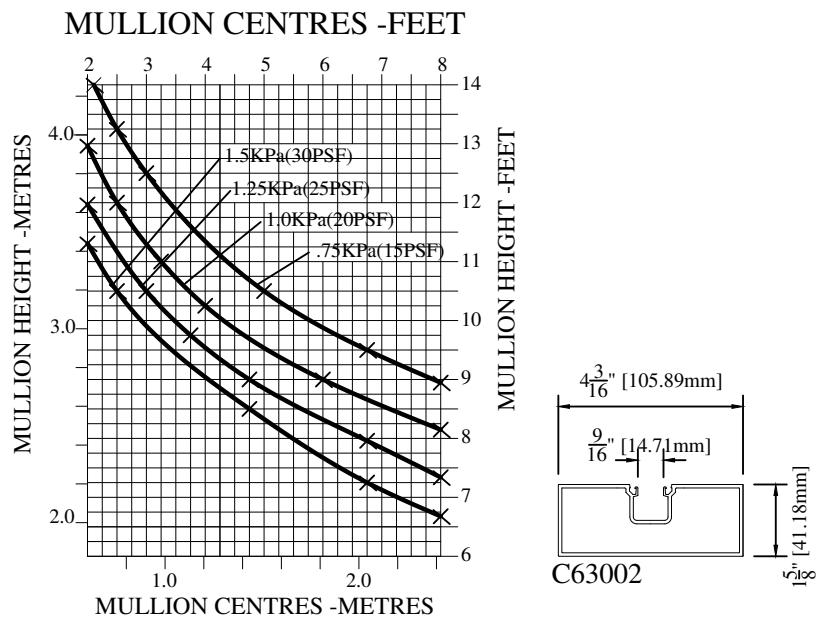
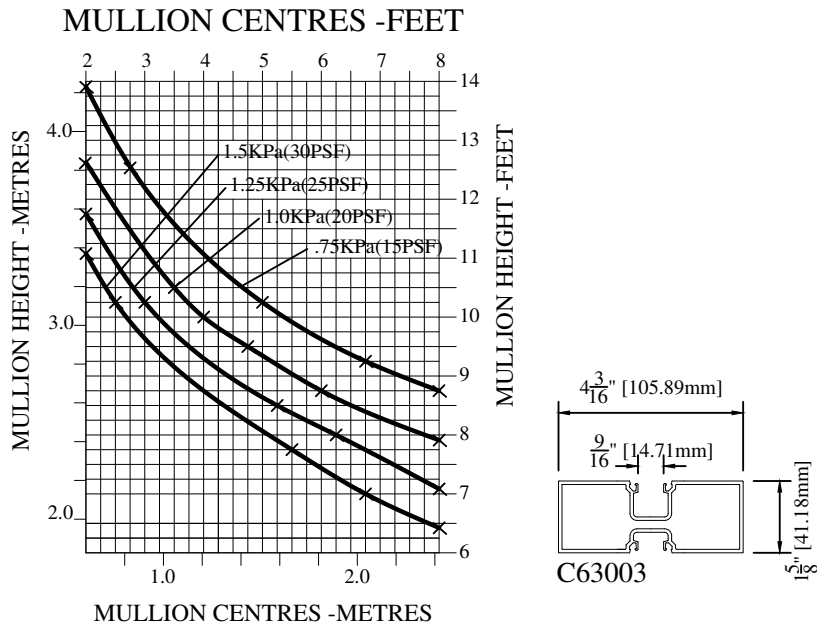
**WINDSPEC** INC.

MANUFACTURERS OF HIGH PERFORMANCE 'WINDSPEC' WINDOWS  
ALUMINUM ENTRANCE SYSTEMS AND ARCHITECTURAL PANELS  
1310 CREDITSTONE RD, CONCORD, ONTARIO L4K 5T7  
Telephone (905) 738 -8311 Fax (905) 738 - 6188

FEBRUARY 2017

# 630 SERIES

## WIND LOAD CHARTS



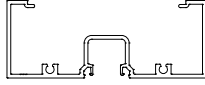
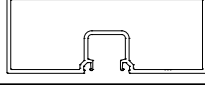
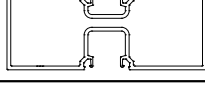
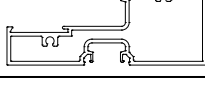
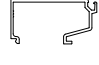
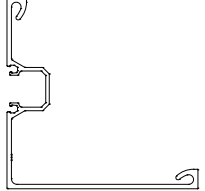
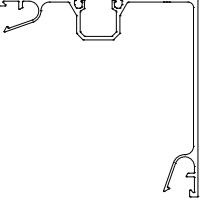
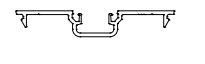
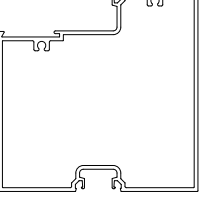
**WINDSPEC** INC.

MANUFACTURERS OF HIGH PERFORMANCE 'WINDSPEC' WINDOWS  
ALUMINUM ENTRANCE SYSTEMS AND ARCHITECTURAL PANELS  
1310 CREDITSTONE RD, CONCORD, ONTARIO L4K 5T7  
Telephone (905) 738-8311 Fax (905) 738-6188

FEBRUARY 2017

# 630 SERIES

## PARTS LIST

Part Number	Description	Profile
C-63001	1 $\frac{3}{4}$ " x 4 $\frac{1}{2}$ " Open Back Frame	
C-63002	1 $\frac{3}{4}$ " x 4 $\frac{1}{2}$ " Closed Back Frame	
C-63003	1 $\frac{3}{4}$ " x 4 $\frac{1}{2}$ " Double Pocket Mullion	
C63004	1 $\frac{3}{4}$ " x 4 $\frac{1}{2}$ " Horizontal Sill	
C-63005	Square Snap-in Glass Stop	
C-63006	Female Half Corner Mullion	
C-63007	Male Half Corner Mullion	
C-63008	Cover Plate for Open Back Frame	
C-63012	S630 4 $\frac{1}{2}$ " Sill	



**WINDSPEC** INC.










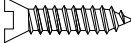


MANUFACTURERS OF HIGH PERFORMANCE 'WINDSPEC' WINDOWS  
ALUMINUM ENTRANCE SYSTEMS AND ARCHITECTURAL PANELS  
1310 CREDITSTONE RD, CONCORD, ONTARIO L4K 5T7  
Telephone (905) 738 -8311 Fax (905) 738 - 6188

FEBRUARY 2017



# 630 SERIES

## PARTS LIST

Part Number	Description	Profile
C-40015	Saddle Stop (Front) for $\frac{1}{4}$ " & 1" Units	
C-40016	Saddle Stop Base for Single Glass ( $\frac{1}{4}$ ")	
C-63009	Blade Door Stop	
C-63010	Flush Surface Pocket Filler	
H-63001/ C-63033	Sill Shear Block	
H-63002/ C-63032	Mullion Shear Block	
R-65002-R	Glazing Spline for $\frac{1}{4}$ " Glass	
R-65004	Glazing Spline for $\frac{3}{8}$ " Glass	
R-60187	Weatherstrip	
H-63004	#10 x $\frac{1}{2}$ " Fabrication Screw Steel	
H-63005	#10 x $\frac{1}{2}$ " Sabrication Screw S.S.	
H-63006	#12 x 2" Assembly Screw Steel	



**WINDSPEC** INC.

MANUFACTURERS OF HIGH PERFORMANCE 'WINDSPEC' WINDOWS  
ALUMINUM ENTRANCE SYSTEMS AND ARCHITECTURAL PANELS  
1310 CREDITSTONE RD, CONCORD, ONTARIO L4K 5T7  
Telephone (905) 738 -8311 Fax (905) 738 - 6188

FEBRUARY 2017