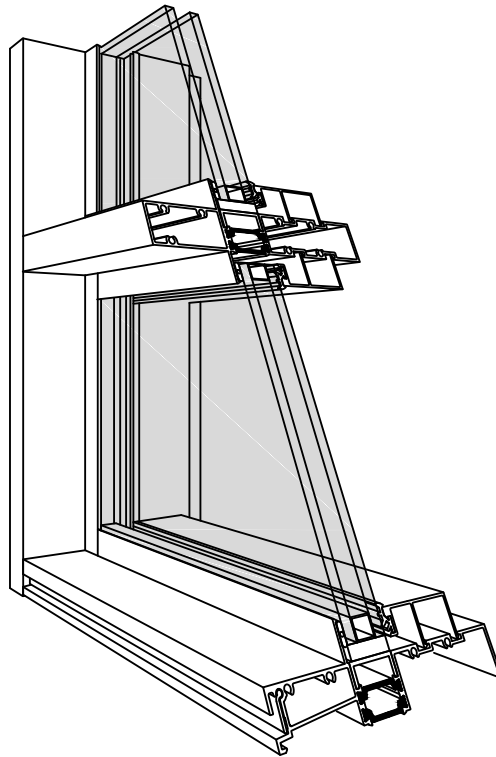


925 RAIN SCREEN



KEY FEATURES

- High Performance Thermal Break
- Rain screen design
- 1" Sight line
- Accommodates 1" double or 1- $\frac{3}{4}$ " triple glazing units
- 6" Mullion Depth
- Compatible with a variety of Windspec operable windows
- Available in anodized and painted finishes

PERFORMANCE

- U values as low as 0.30 (1" glazing)
- U value as low as 0.25 (1- $\frac{3}{4}$ " glazing)
- NAFS: AW - PG70
- A440- A3, C5, B7
- I-64 (1" glazing)
-



WINDSPEC INC.

MANUFACTURERS OF HIGH PERFORMANCE 'WINDSPEC' WINDOWS
ALUMINUM ENTRANCE SYSTEMS AND ARCHITECTURAL PANELS
1310 CREDITSTONE RD, CONCORD, ONTARIO L4K 5T7
Telephone (905) 738 -8311 Fax (905) 738 - 6188

JANUARY 2016

925 R.S. SERIES

TABLE OF CONTENTS

TYPICAL DETAILS _____	003
535 VENT PROJECT OUT DETAILS _____	004
535 VENT PROJECT IN DETAILS _____	005
575 VENT PROJECT OUT DETAILS _____	006
DOUBLE GLAZED CORNER DETAILS _____	007
TYPICAL TRIPLE GLAZED DETAILS _____	008
535 VENT PROJECT OUT TRIPLE GLAZED DETAILS _____	009
535 VENT PROJECT IN TRIPLE GLAZED DETAILS _____	010
575 VENT PROJECT OUT TRIPLE GLAZED DETAILS _____	011
TRIPLE GLAZED CORNER DETAILS _____	012
SIDE SLIDER TYPICAL DETAILS _____	013
WIND LOAD CHARTS _____	015
THERMAL CHARTS _____	017



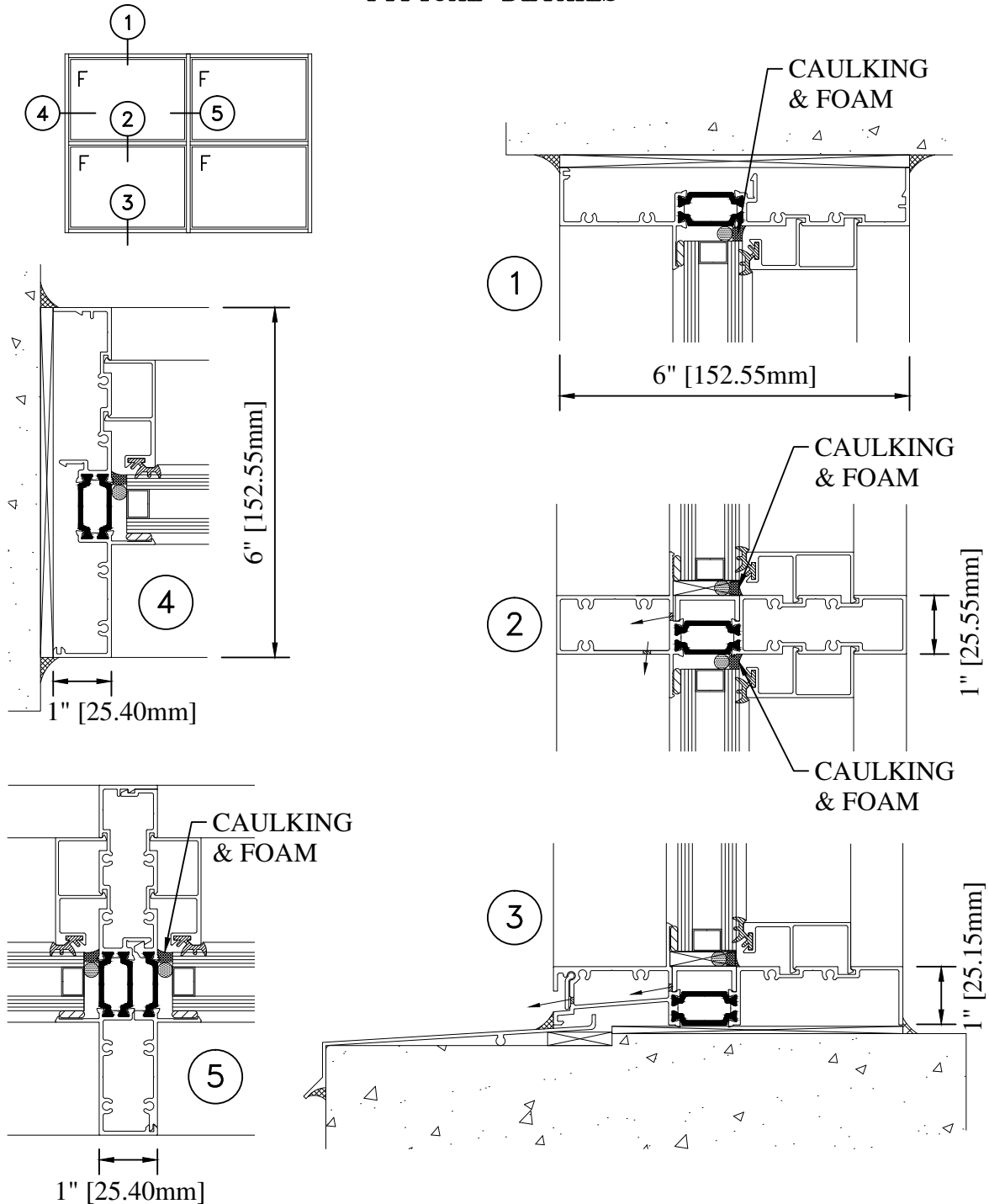
WINDSPEC INC.

MANUFACTURERS OF HIGH PERFORMANCE 'WINDSPEC' WINDOWS
ALUMINUM ENTRANCE SYSTEMS AND ARCHITECTURAL PANELS
1310 CREDITSTONE RD, CONCORD, ONTARIO L4K 5T7
Telephone (905) 738 -8311 Fax (905) 738 - 6188

JANUARY 2016

925 R.S. SERIES

TYPICAL DETAILS

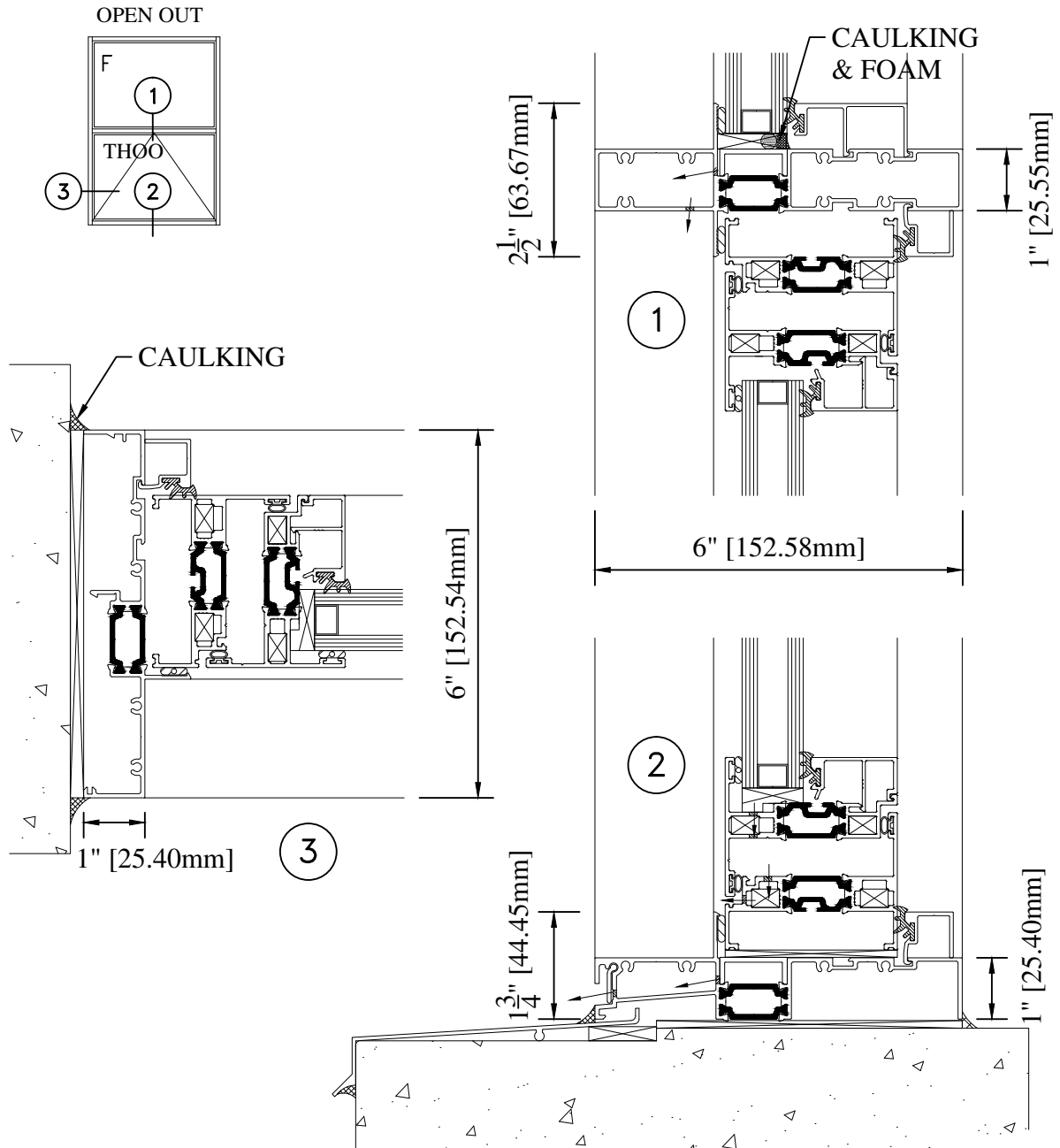


WINDSPEC INC.
MANUFACTURERS OF HIGH PERFORMANCE 'WINDSPEC' WINDOWS
ALUMINUM ENTRANCE SYSTEMS AND ARCHITECTURAL PANELS
1310 CREDITSTONE RD, CONCORD, ONTARIO L4K 5T7
Telephone (905) 738-8311 Fax (905) 738-6188

JANUARY 2016

925 R.S. SERIES

535 VENT PROJECT OUT DETAILS



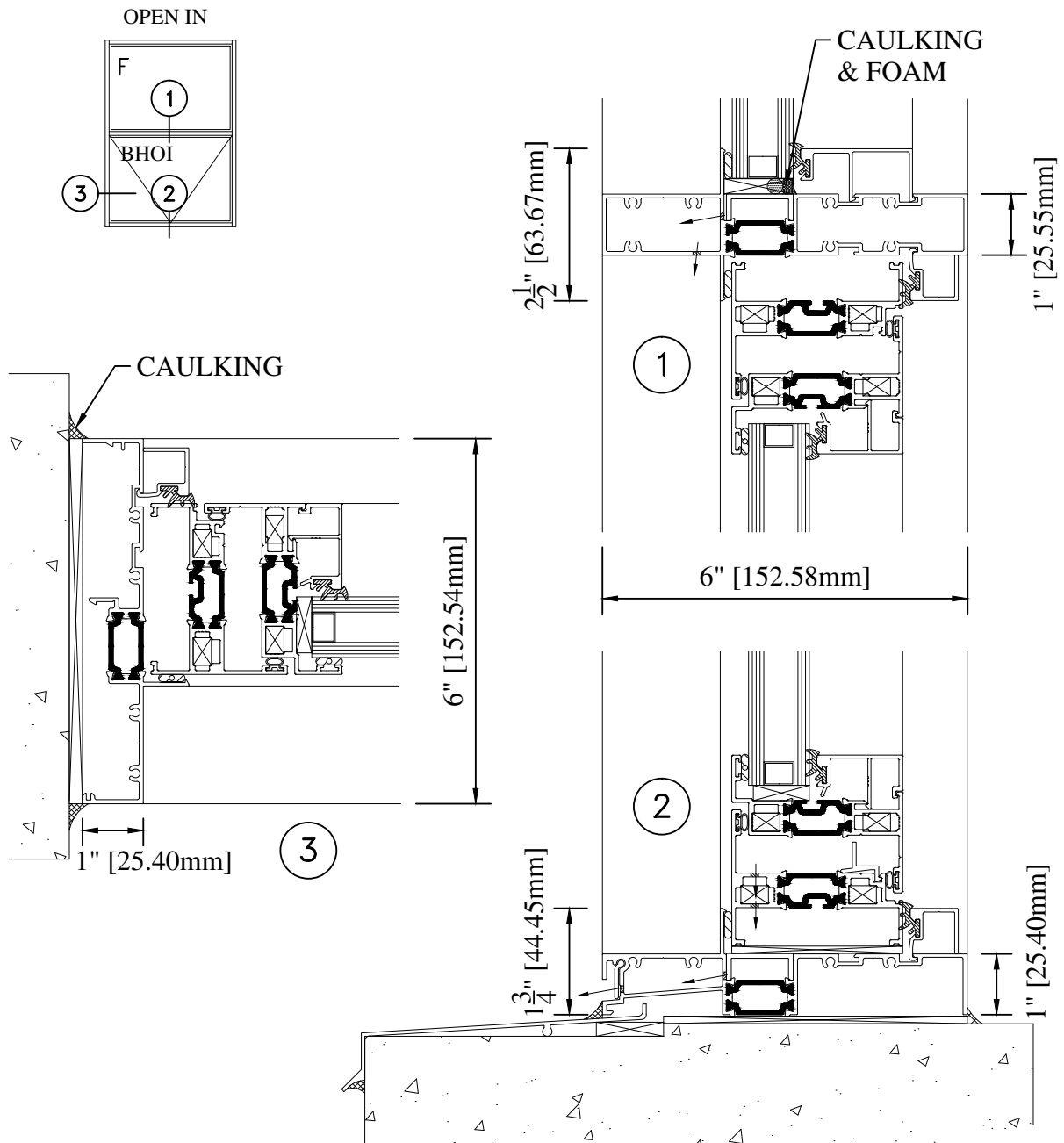
WINDSPEC INC.

MANUFACTURERS OF HIGH PERFORMANCE 'WINDSPEC' WINDOWS
ALUMINUM ENTRANCE SYSTEMS AND ARCHITECTURAL PANELS
1310 CREDITSTONE RD, CONCORD, ONTARIO L4K 5T7
Telephone (905) 738 -8311 Fax (905) 738 - 6188

JANUARY 2016

925 R.S. SERIES

535 VENT PROJECT IN DETAILS



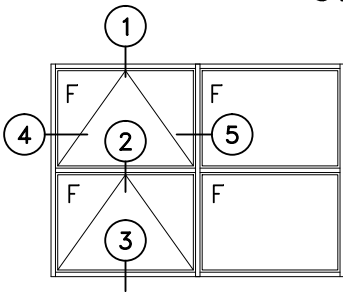
WINDSPEC INC.

MANUFACTURERS OF HIGH PERFORMANCE 'WINDSPEC' WINDOWS
ALUMINUM ENTRANCE SYSTEMS AND ARCHITECTURAL PANELS
1310 CREDITSTONE RD, CONCORD, ONTARIO L4K 5T7
Telephone (905) 738 -8311 Fax (905) 738 - 6188

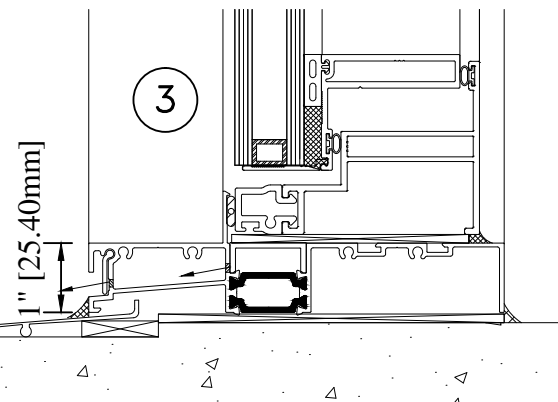
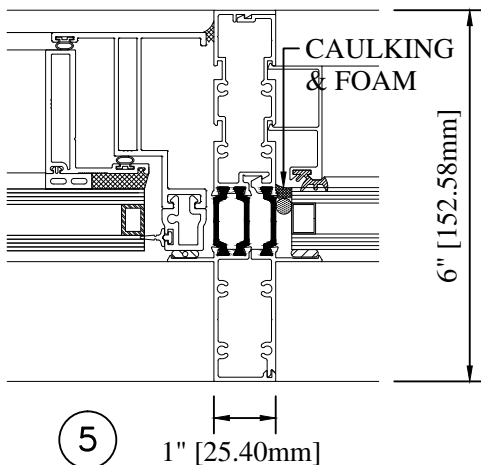
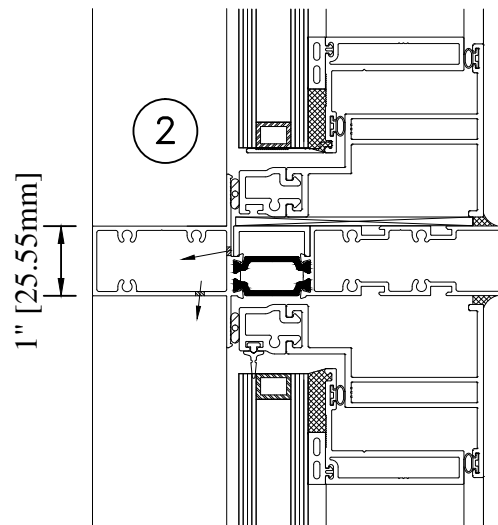
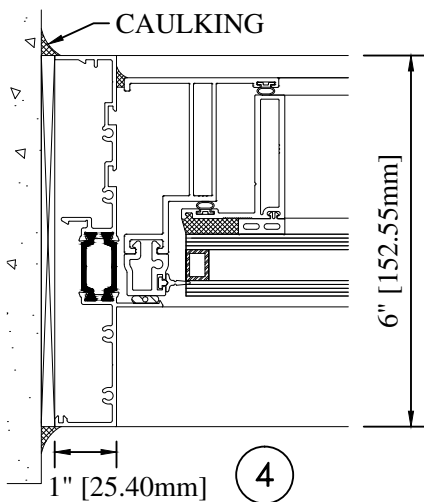
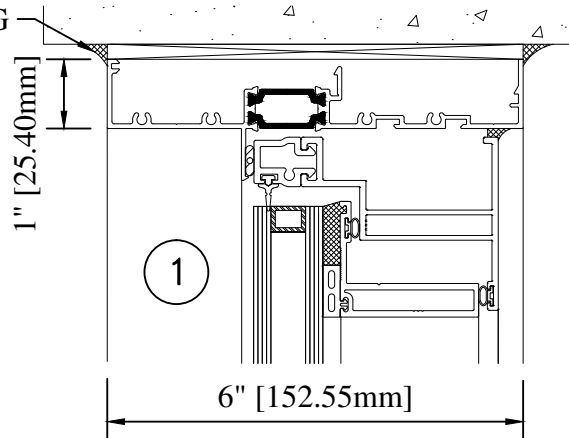
JANUARY 2016

925 R.S. SERIES

575 VENT PROJECT OUT DETAILS



CAULKING



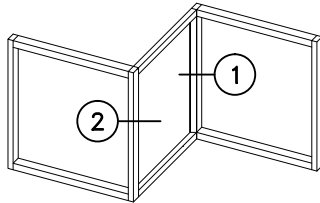
WINDSPEC INC.

MANUFACTURERS OF HIGH PERFORMANCE 'WINDSPEC' WINDOWS
ALUMINUM ENTRANCE SYSTEMS AND ARCHITECTURAL PANELS
1310 CREDITSTONE RD, CONCORD, ONTARIO L4K 5T7
Telephone (905) 738 -8311 Fax (905) 738 - 6188

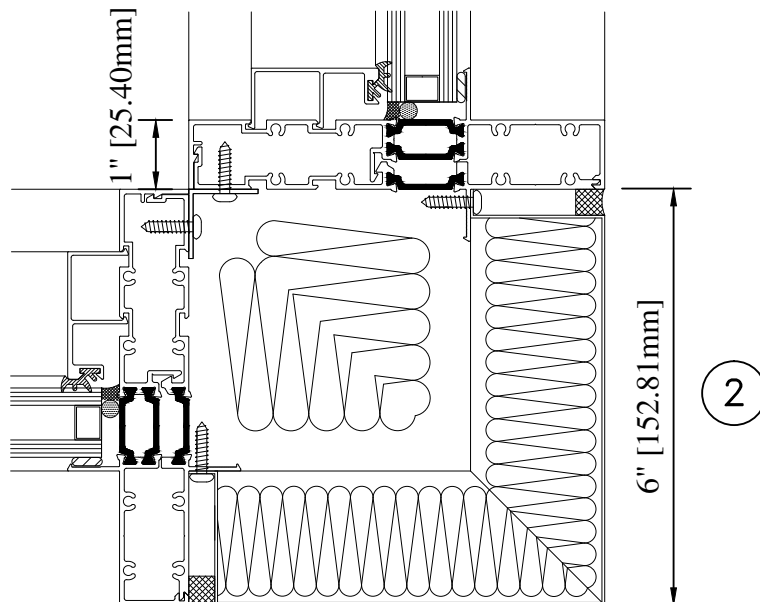
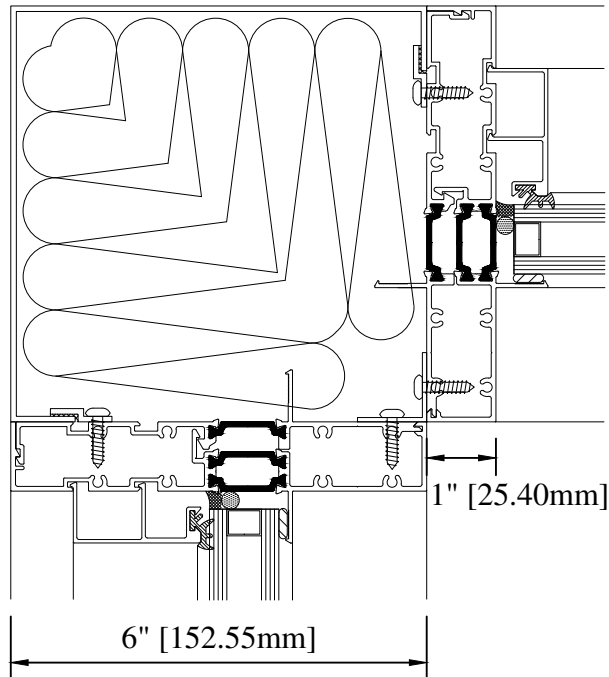
JANUARY 2016

925 R.S. SERIES

DOUBLE GLAZED CORNER DETAILS



1

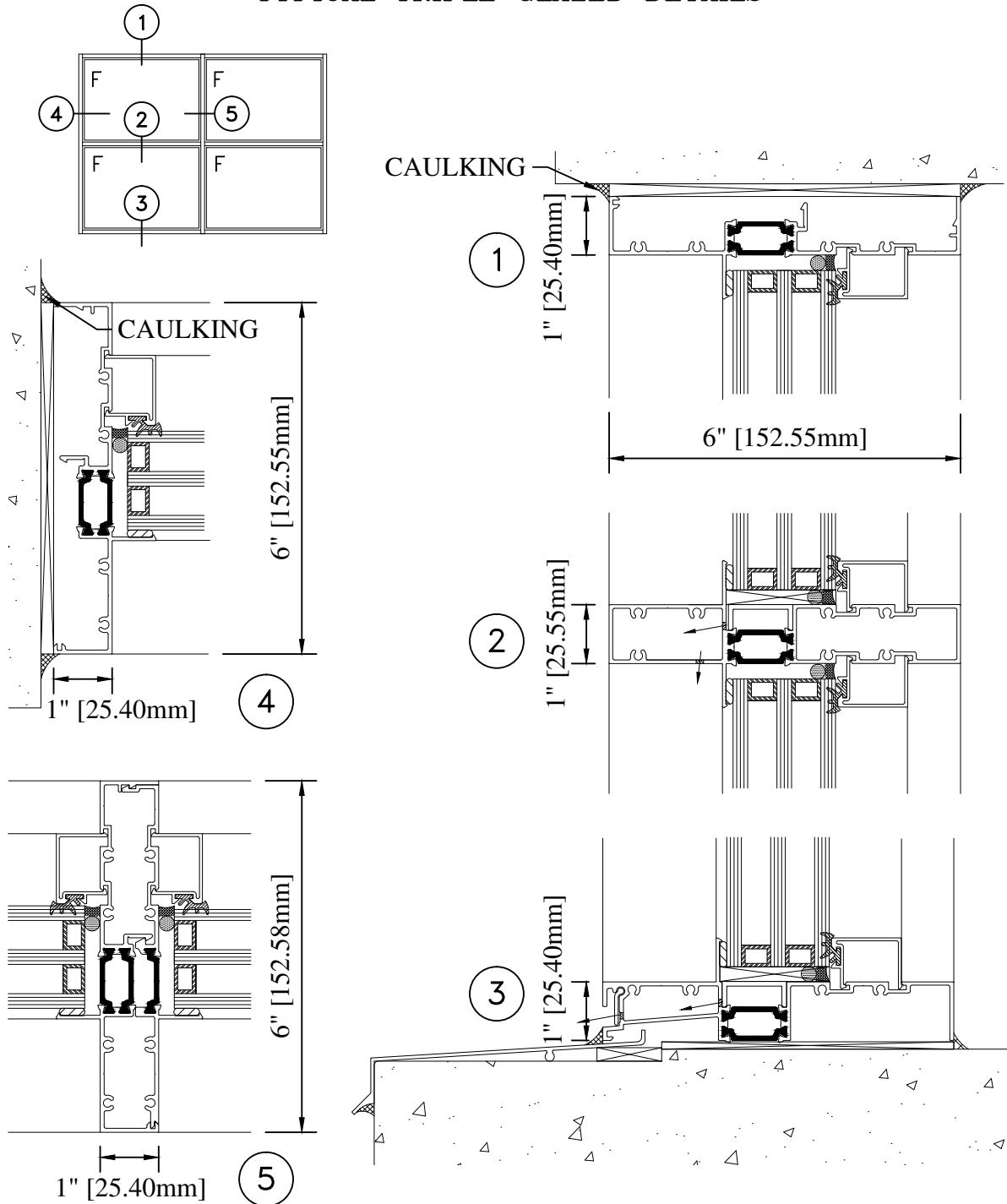


WINDSPEC INC.
MANUFACTURERS OF HIGH PERFORMANCE 'WINDSPEC' WINDOWS
ALUMINUM ENTRANCE SYSTEMS AND ARCHITECTURAL PANELS
1310 CREDITSTONE RD, CONCORD, ONTARIO L4K 5T7
Telephone (905) 738 -8311 Fax (905) 738 - 6188

JANUARY 2016

925 R.S. SERIES

TYPICAL TRIPLE GLAZED DETAILS



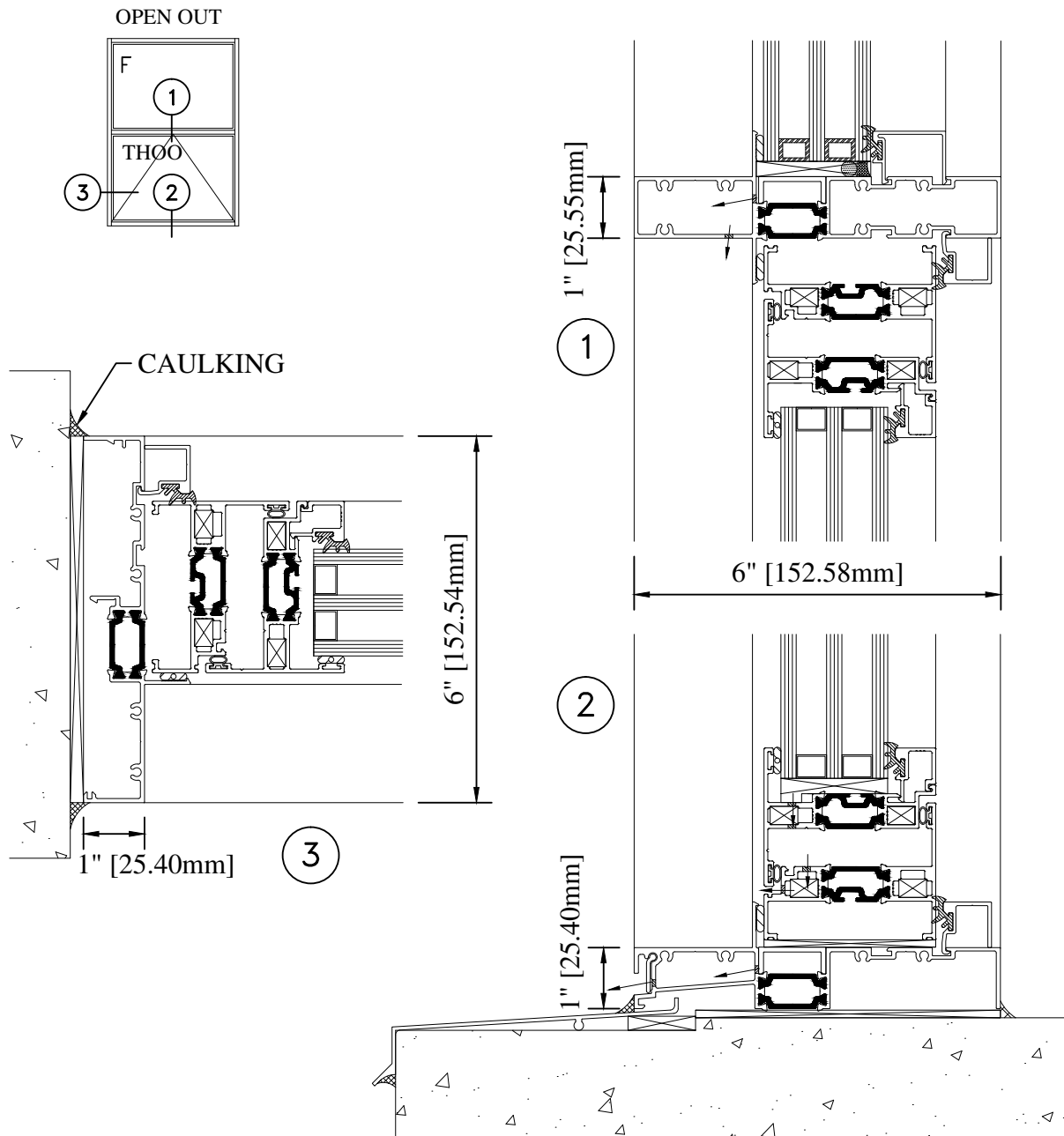
WINDSPEC INC.

MANUFACTURERS OF HIGH PERFORMANCE 'WINDSPEC' WINDOWS
ALUMINUM ENTRANCE SYSTEMS AND ARCHITECTURAL PANELS
1310 CREDITSTONE RD, CONCORD, ONTARIO L4K 5T7
Telephone (905) 738-8311 Fax (905) 738-6188

JANUARY 2016

925 R.S. SERIES

535 VENT PROJECT OUT TRIPLE GLAZED DETAILS



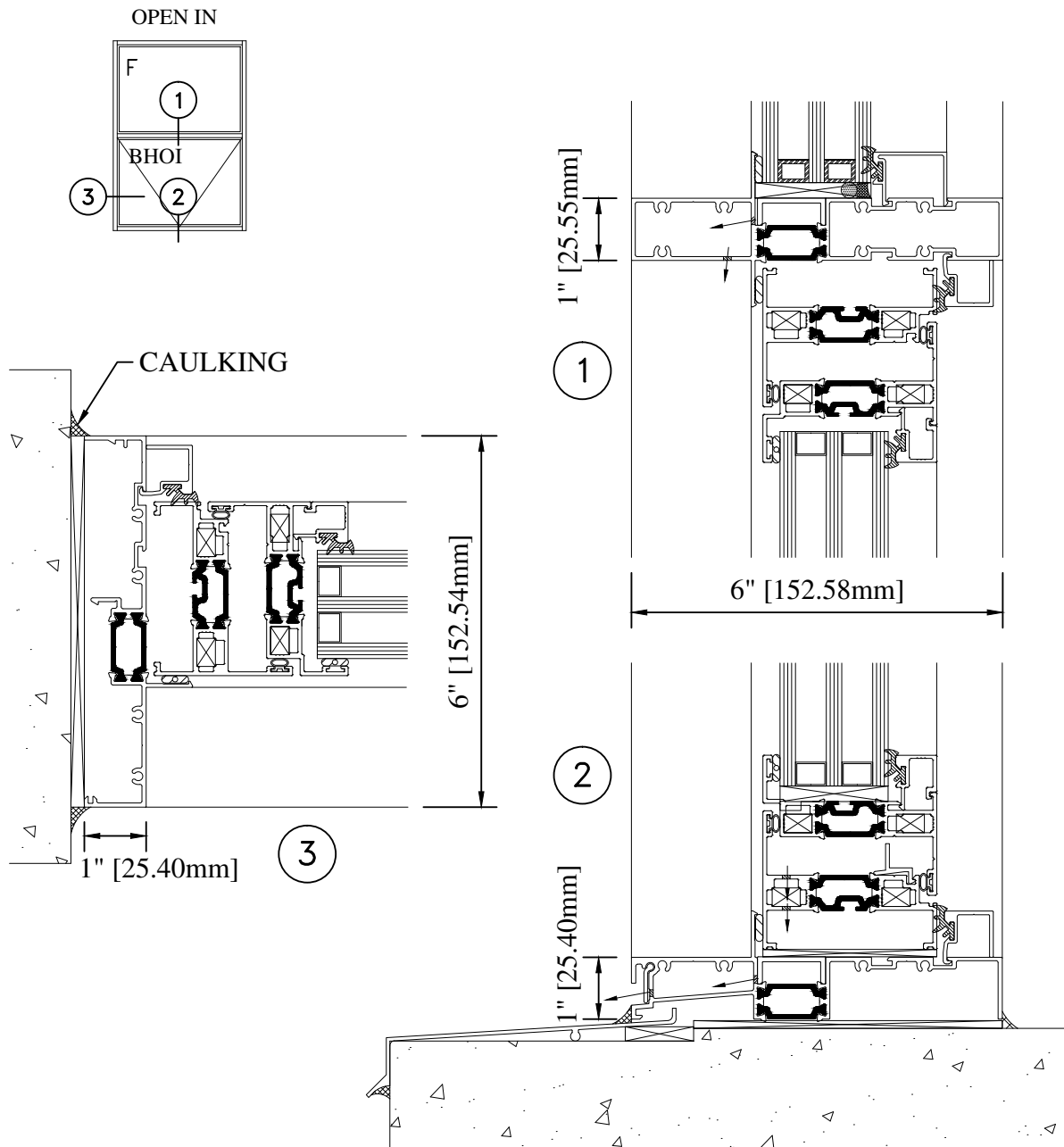
WINDSPEC INC.

MANUFACTURERS OF HIGH PERFORMANCE 'WINDSPEC' WINDOWS
ALUMINUM ENTRANCE SYSTEMS AND ARCHITECTURAL PANELS
1310 CREDITSTONE RD, CONCORD, ONTARIO L4K 5T7
Telephone (905) 738 -8311 Fax (905) 738 - 6188

JANUARY 2016

925 R.S. SERIES

535 VENT PROJECT IN TRIPLE GLAZED DETAILS

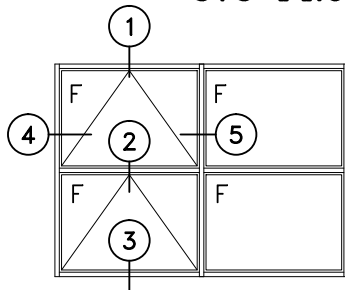


WINDSPEC INC.
MANUFACTURERS OF HIGH PERFORMANCE 'WINDSPEC' WINDOWS
ALUMINUM ENTRANCE SYSTEMS AND ARCHITECTURAL PANELS
1310 CREDITSTONE RD, CONCORD, ONTARIO L4K 5T7
Telephone (905) 738 -8311 Fax (905) 738 - 6188

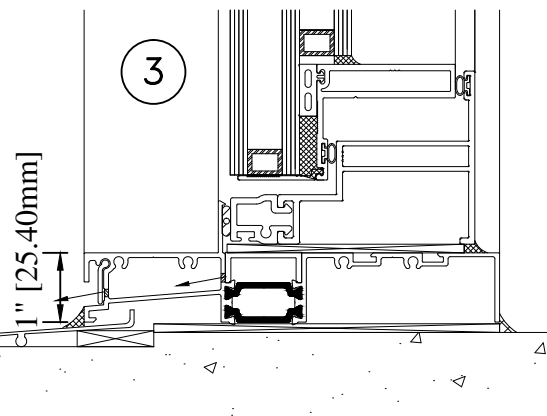
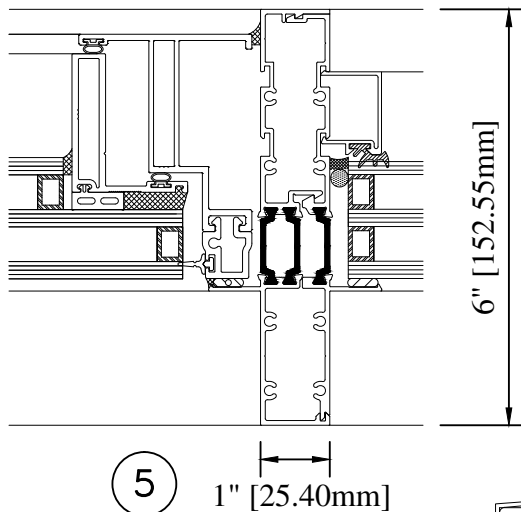
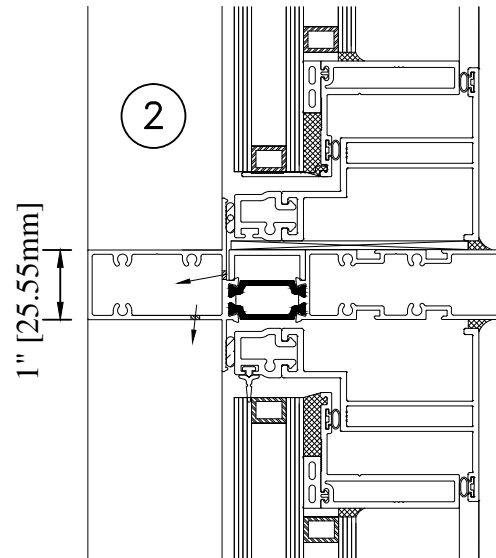
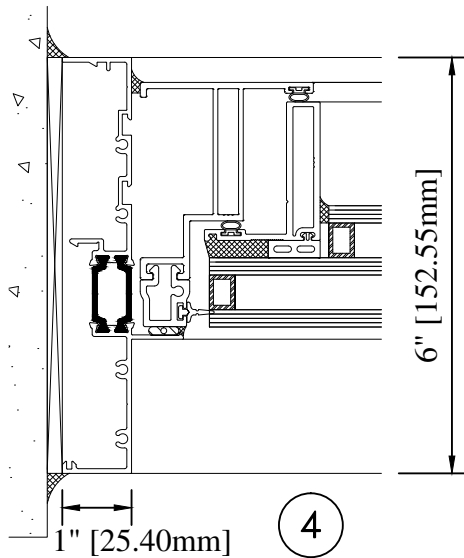
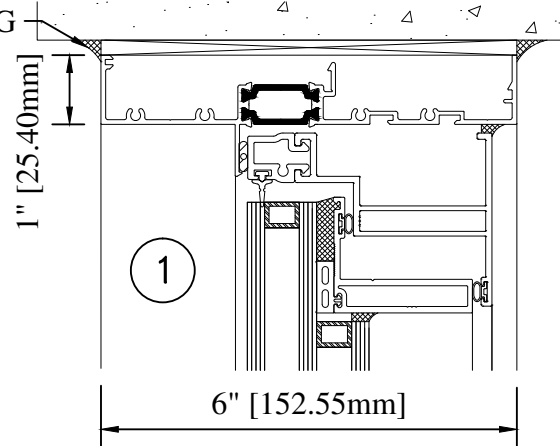
JANUARY 2016

925 R.S. SERIES

575 PROJECT OUT TRIPLE GLAZED DETAILS



CAULKING



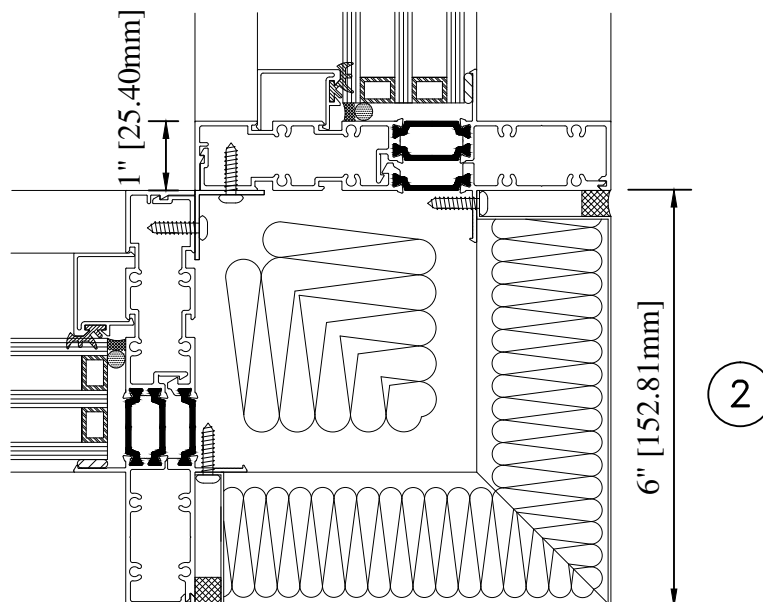
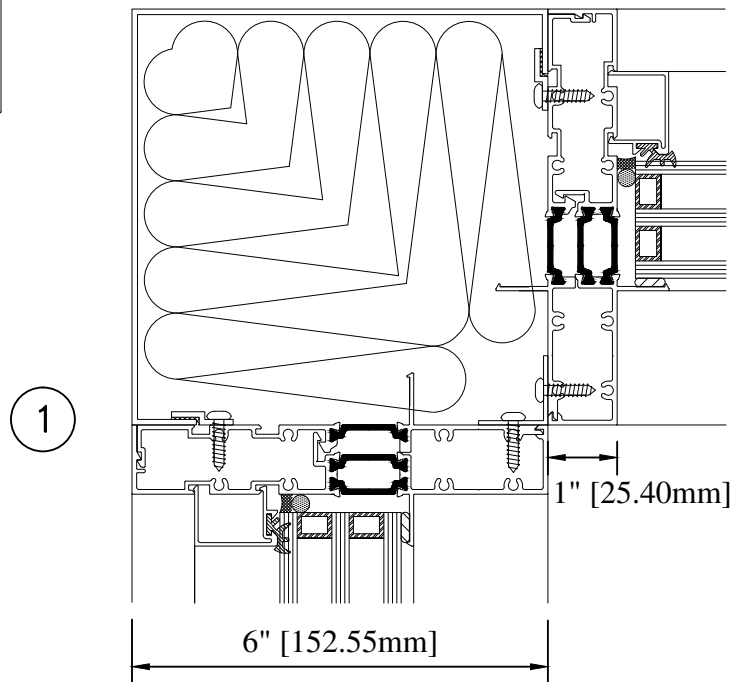
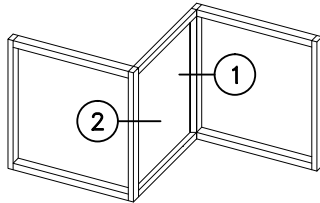
WINDSPEC INC.

MANUFACTURERS OF HIGH PERFORMANCE 'WINDSPEC' WINDOWS
ALUMINUM ENTRANCE SYSTEMS AND ARCHITECTURAL PANELS
1310 CREDITSTONE RD, CONCORD, ONTARIO L4K 5T7
Telephone (905) 738-8311 Fax (905) 738-6188

JANUARY 2016

925 R.S. SERIES

TRIPLE GLAZED CORNER DETAILS

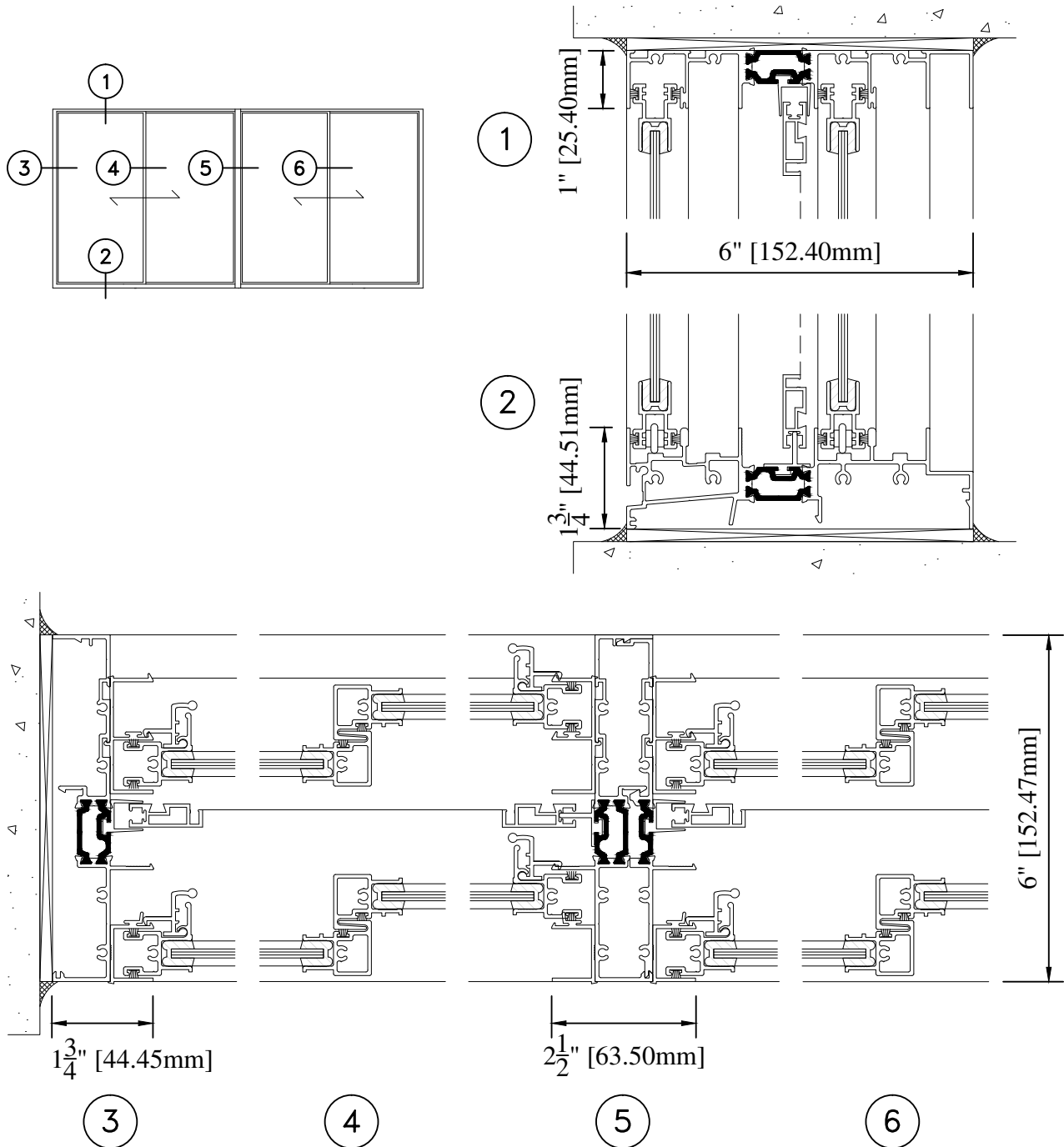


WINDSPEC INC.
MANUFACTURERS OF HIGH PERFORMANCE 'WINDSPEC' WINDOWS
ALUMINUM ENTRANCE SYSTEMS AND ARCHITECTURAL PANELS
1310 CREDITSTONE RD, CONCORD, ONTARIO L4K 5T7
Telephone (905) 738 -8311 Fax (905) 738 - 6188

JANUARY 2016

925 R.S. SERIES

SIDE SLIDER TYPICAL DETAILS

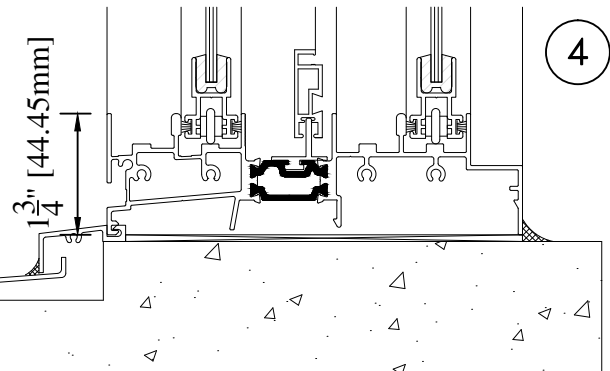
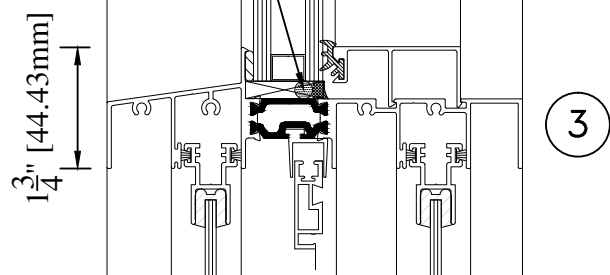
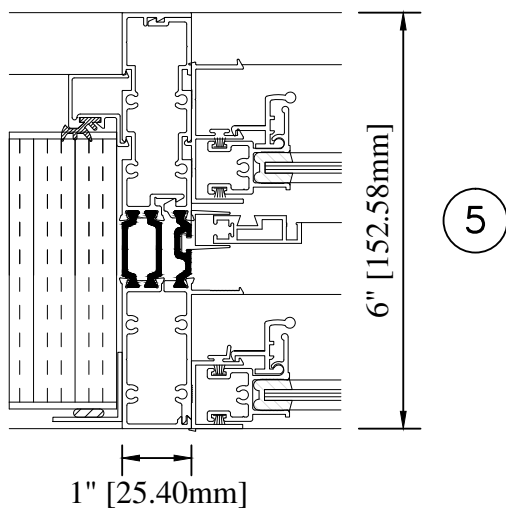
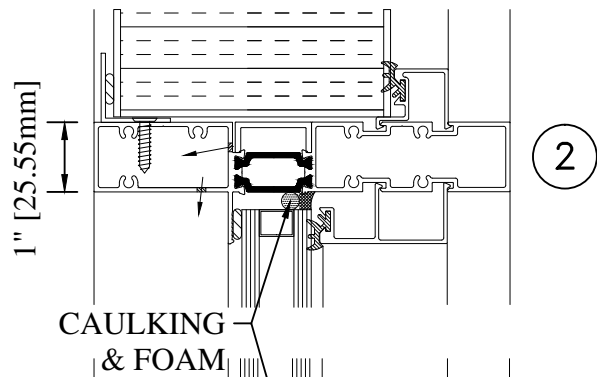
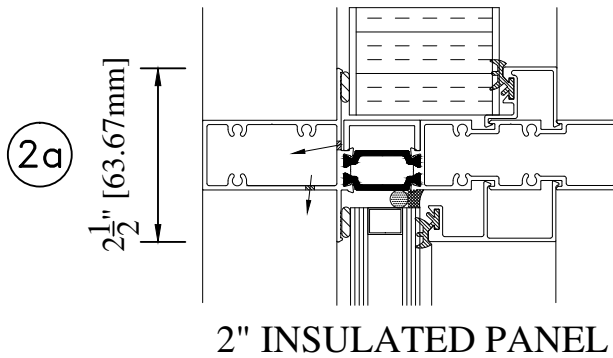
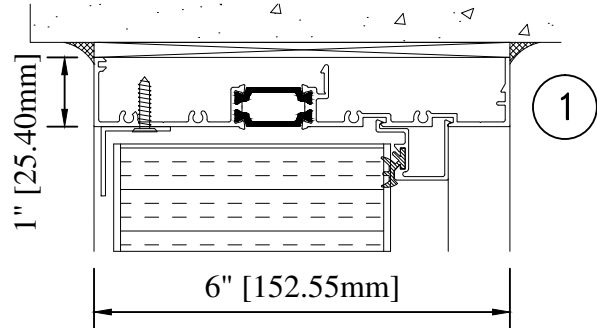
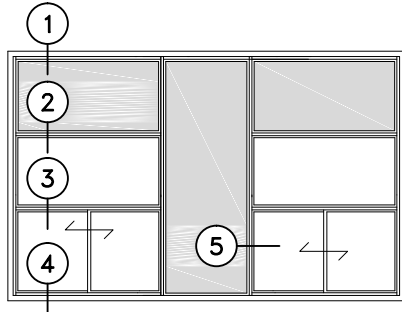


WINDSPEC INC.
MANUFACTURERS OF HIGH PERFORMANCE 'WINDSPEC' WINDOWS
ALUMINUM ENTRANCE SYSTEMS AND ARCHITECTURAL PANELS
1310 CREDITSTONE RD, CONCORD, ONTARIO L4K 5T7
Telephone (905) 738 -8311 Fax (905) 738 - 6188

JANUARY 2016

925 R.S. SERIES

SIDE SLIDER TYPICAL DETAILS

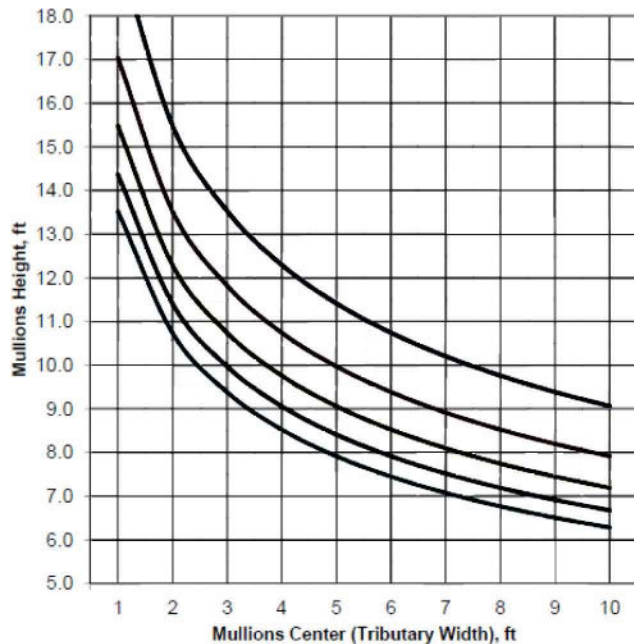


WINDSPEC INC.
MANUFACTURERS OF HIGH PERFORMANCE 'WINDSPEC' WINDOWS
ALUMINUM ENTRANCE SYSTEMS AND ARCHITECTURAL PANELS
1310 CREDITSTONE RD, CONCORD, ONTARIO L4K 5T7
Telephone (905) 738 -8311 Fax (905) 738 - 6188

JANUARY 2016

925 R.S. SERIES

WIND LOAD CHARTS

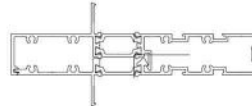


925 Standard Mullion

$2\frac{1}{2}" \times 6"$
(63.5mmx152.55mm)
double glazed

$I_{xx} = 4.832 \text{ in}^4$
 $S_{xx} = 1.589 \text{ in}^3$

A- 20 PSF
B- 30 PSF
C- 40 PSF
D- 50 PSF
E- 60 PSF

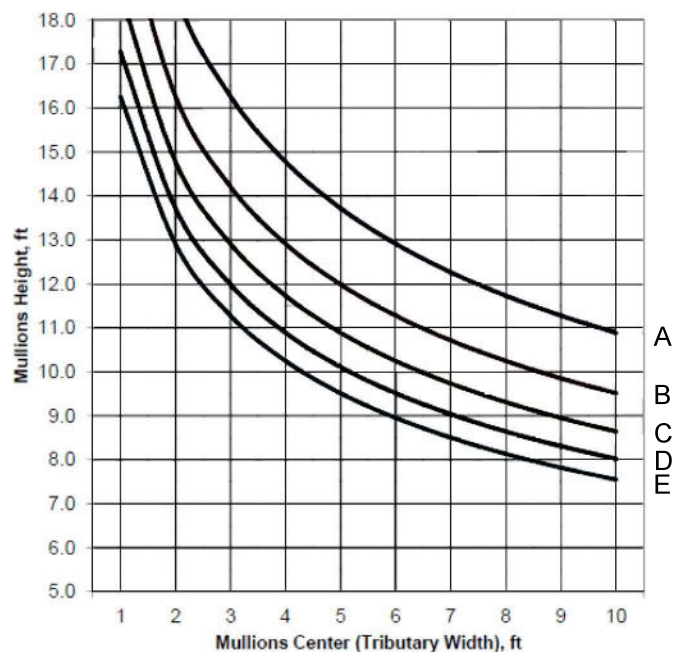
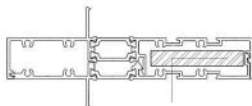


925 Standard Mullion (Reinforced)

$2\frac{1}{2}" \times 6"$
(63.5mmx152.55mm)
double glazed

$I_{xx} = 8.383 \text{ in}^4$
 $S_{xx} = 2.08 \text{ in}^3$

A- 20 PSF
B- 30 PSF
C- 40 PSF
D- 50 PSF
E- 60 PSF



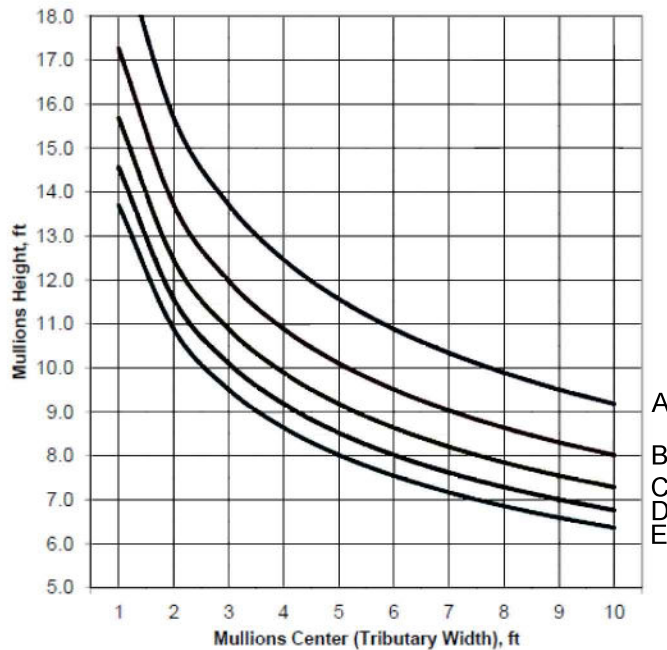
WINDSPEC INC.

MANUFACTURERS OF HIGH PERFORMANCE 'WINDSPEC' WINDOWS
ALUMINUM ENTRANCE SYSTEMS AND ARCHITECTURAL PANELS
1310 CREDITSTONE RD, CONCORD, ONTARIO L4K 5T7
Telephone (905) 738-8311 Fax (905) 738-6188

JANUARY 2016

925 R.S. SERIES

WIND LOAD CHARTS

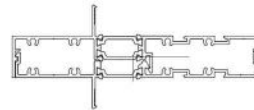


925 Straight Coupling Mullion

$2\frac{1}{2}" \times 6"$
(63.5mm x 152.55mm)
double glazed

$I_{xx} = 5.025 \text{ in}^4$
 $S_{xx} = 1.626 \text{ in}^3$

A- 20 PSF
B- 30 PSF
C- 40 PSF
D- 50 PSF
E- 60 PSF

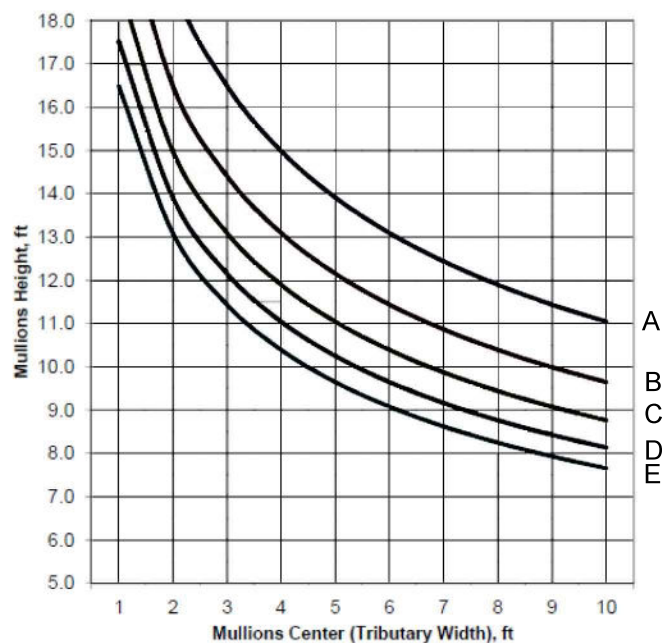
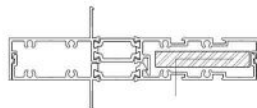


925 Straight Coupling Mullion (Reinforced)

$2\frac{1}{2}" \times 6"$
(63.5mm x 152.55mm)
double glazed

$I_{xx} = 8.746 \text{ in}^4$
 $S_{xx} = 2.187 \text{ in}^3$

A- 20 PSF
B- 30 PSF
C- 40 PSF
D- 50 PSF
E- 60 PSF



WINDSPEC INC.

MANUFACTURERS OF HIGH PERFORMANCE 'WINDSPEC' WINDOWS
ALUMINUM ENTRANCE SYSTEMS AND ARCHITECTURAL PANELS
1310 CREDITSTONE RD, CONCORD, ONTARIO L4K 5T7
Telephone (905) 738-8311 Fax (905) 738-6188

JANUARY 2016

925 R.S. SERIES

THERMAL CHARTS

U-cog	U-Product 925 Series Dbl		
	Aluminum Spacer	Stainless Steel Spacer	Non-Metal Spacer
0.18	0.29	0.27	0.25
0.20	0.30	0.29	0.27
0.22	0.32	0.31	0.28
0.24	0.34	0.32	0.30
0.26	0.35	0.34	0.32
0.28	0.37	0.36	0.33
0.30	0.39	0.37	0.35
0.32	0.40	0.39	0.37
0.34	0.42	0.41	0.39
0.36	0.44	0.43	0.40
0.38	0.45	0.44	0.42
0.40	0.47	0.46	0.44
0.42	0.49	0.48	0.45
0.44	0.50	0.49	0.47
0.46	0.52	0.51	0.49
0.48	0.54	0.53	0.51

U-cog	U-Product 925 Series Tpl		
	Aluminum Spacer	Stainless Steel Spacer	Non-Metal Spacer
0.10	0.22	0.20	0.18
0.12	0.23	0.22	0.19
0.14	0.25	0.23	0.21
0.16	0.27	0.25	0.23
0.18	0.28	0.27	0.25
0.2	0.30	0.28	0.26
0.22	0.32	0.30	0.28
0.24	0.33	0.32	0.30
0.26	0.35	0.33	0.31
0.28	0.37	0.35	0.33
0.30	0.38	0.37	0.35

925 Series (Dbl and Tpl Glazed)	
SHGC-cog	SHGC-Product
0.05	0.05
0.10	0.09
0.15	0.14
0.20	0.18
0.25	0.23
0.30	0.27
0.35	0.32
0.40	0.36
0.45	0.41
0.50	0.45
0.55	0.49
0.60	0.54
0.65	0.58
0.70	0.63
0.75	0.67



WINDSPEC INC.

MANUFACTURERS OF HIGH PERFORMANCE 'WINDSPEC' WINDOWS
ALUMINUM ENTRANCE SYSTEMS AND ARCHITECTURAL PANELS
1310 CREDITSTONE RD, CONCORD, ONTARIO L4K 5T7
Telephone (905) 738 -8311 Fax (905) 738 - 6188

JANUARY 2016