



5400 HTP

HIGH THERMAL PERFORMANCE CURTAINWALL

PRODUCT DESCRIPTION

The 5400HTP curtainwall provides exceptional thermal performance that goes beyond current building codes. As a stick build system, the ease of fabrication and installation makes this an ideal choice for both small and large size projects.

KEY FEATURES

- 2" wide profile
- Glass reinforced thermal break allows for exceptionally high thermal performance without affecting the structural integrity of the system.
- Mullion depths available: 2-3/4", 4", 5"
 - Overall system depth to be 2-1/4" deeper than mullion depth for double glaze and 3" for triple glazed.
- Capped glazing and SSG configurations available.
- Pressure equalized internal drainage (applies to capped mullions only).
- Multiple anchoring methods available including 'F' and 'T' sleeve anchors.
- Compatible with all Windspec doors:
 - HTP doors (high thermal performance)
 - Standard commercial doors
 - Exposed and Flush door adaptors available
- Compatible with most Windspec operable windows:
 - 535 projecting vents (Awning, Hopper, Casement)
 - 575 frameless projecting vents (Awning, Casement)
 - 720 side slider
 - 740 single/double hung
 - 3-1/4" louver system
 - 2-1/4" bypass louver system
- Optional integrated trim system.



TECHNICAL DATA SHEET

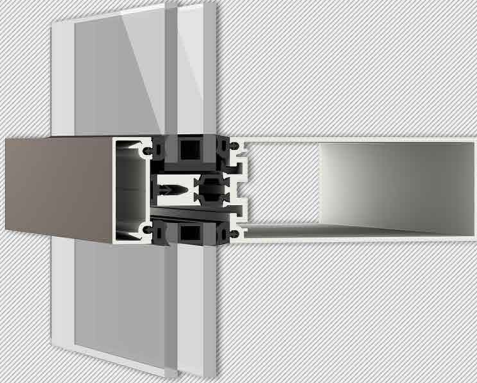
WINDSPEC
1310 Creditstone Rd
Concord ON, L4K5T7
905-738-8311
www.windspec.com

MATERIAL

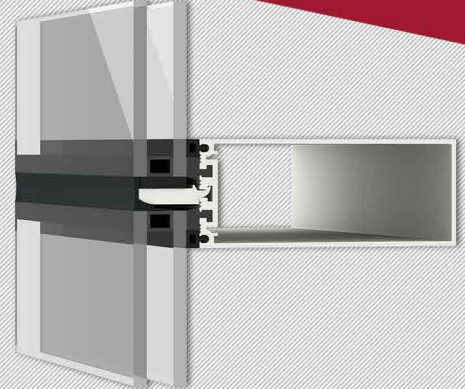
- All aluminum to be 6063-T6 tempered
- Thermal Break polyamide 6.6, 25% glass fiber reinforced
- Gaskets to be silicone or EPDM
- EPDM corner plugs
- Stainless steel fasteners for pressure plates

FINISHES

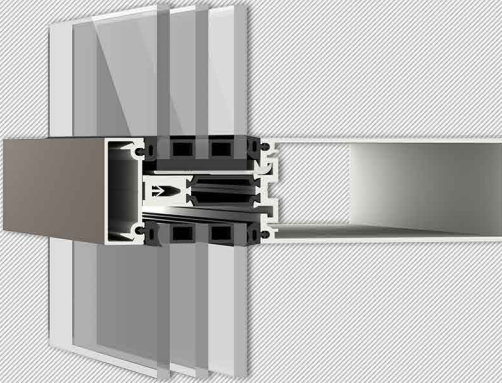
- 2 Color options available (interior/exterior)
- Clear Anodized (.0004)
- Clear Anodized .0007
- #40 Bronze Anodized .0007
- #26 light Bronze Anodized .0007
- Champagne Anodized .0007
- Black Anodized .0007
- Acid Etch Anodizing process
- Painted finished available: Duracron (one-coat), Duranar (2 coat), Duranar XL (3 coat)
- Powder coating available upon request
- Wood grain finishes available



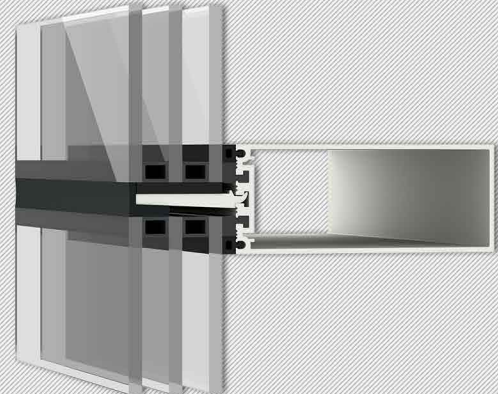
Double Glazed Capped



Double Glazed SSG



Triple Glazed Capped



Triple Glazed SSG

KEY PERFORMANCE FIGURES

PROPERTY	STANDARD ALLOWANCE	RESULT	DESIGNATION
Air Infiltration @ 300 Pa	Fixed Level: <0.2 L/s m2	Pass	FW-AW (fixed)
Air exfiltration @ 300 Pa	Fixed Level: <0.2 L/s m2	Pass	FW-AW (fixed)
Static Water Penetration	No Leakage @ 730 Pa	Pass	FW-AW 100
Structural Design	No permanent damage @ 5040 Pa	Pass	FW-AW100
Forced Entry	Remove all exterior fasteners using common tools within 5 minutes period	Pass	Grade 40

APPLICABLE STANDARDS

- NAFS-AAMA/WDMA/CSA 101/I.S.2/A440-08
- NAFS-AAMA/WDMA/CSA 101/I.S.2/A440-09 Canadian Supplement Section 5
- Air leakage: ASTM E283
- Water penetration: ASTM E331
- Structural performance: ASTM E330
- Wind load calculations: CAN3-S157



WINDSPEC 5400HTP
HIGH THERMAL PERFORMANCE
CURTAINWALL SYSTEM